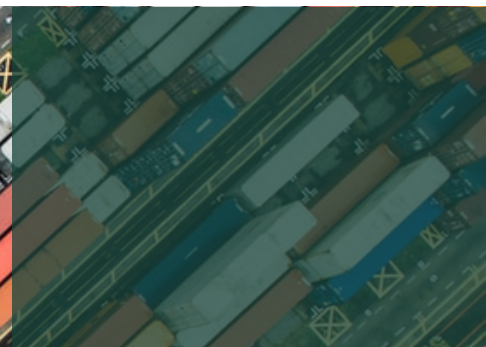


ABET DESTINATION REPORT

APPLIED ENGINEERING SCIENCES (2018-2020)

COLLEGE OF ENGINEERING
MICHIGAN STATE UNIVERSITY

careers.egr.msu.edu | updated March 4, 2022 | photo via Unsplash



Student Composition

Male 68.6% (179)	Mechanical Engineering 21.8% (515)	Chemical Engineering 16.2% (382)	Electrical Engineering 8.8% (207)	Computer Engineering 4.9% (117)	Biosystems Engineering 4.9% (116)
Female 31.4% (82)	Computer Science 21.6% (510)	Applied Engineering Sci 11.0% (261)	Civil Engineering 6.6% (155)	Materials Sci Engineering 2.6% (61)	Environ Engineering 2.5% (60)
White 79.6% (207)	International 6.5% (17)	Asian 4.6% (12)	Hispanic 4.6% (12)	Black 4.2% (11)	Multiracial 0.4% (1)

(boxes are log-scaled for clarity)

Co-Curricular Experiences

72.1% Participated in ≥ 1 internship/co-op	6.3% Participated in undergrad research	20.5% Participated in a volunteer activity	10.2% Participated in education abroad
--	--	---	---

Top Destinations

by Employer	by State	by City (MI)	by City (non-MI)
1. Ford Motors (8)	1. Michigan (96)	1. Detroit* (51)	1. Chicago* (18)
2. General Motors (7)	2. Illinois (22)	2. Lansing* (11)	2. Los Angeles* (5)
3. Amazon (7)	3. California (9)	3. Grand Rapids* (10)	3. Minneapolis* (5)
4. Parker Hannifin (4)	4. Minnesota (7)	4. Zeeland (3)	4. Denver* (4)
5. Textron (4)	5. Ohio (6)	5. Adrian (2)	5. Seattle* (4)
6. Johnson Controls (3)	6. Texas (6)	6. Jackson (2)	6. Austin* (3)
7. Microsoft (3)	7. Colorado (5)	7. Midland (2)	7. Cleveland* (3)
8. PepsiCo (3)	8. Washington (4)	8. Saline (2)	8. Fort Myers* (2)
9. Rocket Companies (3)	9. Florida (3)	9. Ann Arbor (1)	9. Indianapolis* (2)
10. Toyota Motor Corporation (3)	10. New York (3)	10. Ypsilanti (1)	10. St. Louis* (2)

(* denotes metropolitan area, including suburbs)

KEY STATS

2018-2020

Graduating Undergraduates
Applied Engineering Sciences

85.1%

Knowledge Rate
(222/261 responses)

97.3%

Placement Rate
(Employment/Education)

\$65,108

Average Starting Salary

\$65,000

Median Starting Salary

90.5%

Engaged in full- or part-time
employment

6.8%

Enrolled in graduate school or
other continuing education

ABET DESTINATION REPORT

BIOSYSTEMS ENGINEERING (2018-2020)

COLLEGE OF ENGINEERING
MICHIGAN STATE UNIVERSITY

careers.egr.msu.edu | updated March 4, 2022 | photo via Unsplash



Student Composition

Female 65.5% (76)	Mechanical Engineering 21.8% (515)	Chemical Engineering 16.2% (382)	Electrical Engineering 8.8% (207)	Computer Engineering 4.9% (117)	Biosystems Engineering 4.9% (116)
Male 34.5% (40)	Computer Science 21.6% (510)	Applied Engineering Sci 11.0% (261)	Civil Engineering 6.6% (155)	Materials Sci Engineering 2.6% (61)	Environ Engineering 2.5% (60)
White 82.6% (95)	Asian 4.3% (5)	Hispanic 4.3% (5)	International 3.5% (4)	Multiracial 3.5% (4)	Black 1.7% (2)

(boxes are log-scaled for clarity)

Co-Curricular Experiences

83.8% Participated in ≥ 1 internship/co-op	58.6% Participated in undergrad research	40.4% Participated in a volunteer activity	26.3% Participated in education abroad
--	---	---	---

Top Destinations

by Employer	by State	by City (MI)	by City (non-MI)
1. Cargill (4) 2. Pfizer (4) 3. Meijer (3) 4. Nestle (3) 5. Consumers Energy (2) 6. E. & J. Gallo Winery (2) 7. Emergent Biosolutions (2) 8. Fishbeck, Thompson, Carr, & Huber, Inc (2) 9. Hormel Foods Corporation (2) 10. Philips (2)	1. Michigan (47) 2. Illinois (7) 3. Indiana (5) 4. Ohio (4) 5. Wisconsin (3) 6. California (2) 7. Iowa (2) 8. Minnesota (2) 9. Tennessee (2) 10. Colorado (1)	1. Lansing* (14) 2. Detroit* (9) 3. Kalamazoo* (7) 4. Flint (2) 5. Battle Creek (2) 6. Fremont (2) 7. Cadillac (1) 8. Holland (1) 9. Jackson (1) 10. Kentwood (1)	1. Chicago* (5) 2. Indianapolis* (3) 3. Madison, WI* (2) 4. Minneapolis* (2) 5. Bay Area, CA* (1) 6. Houston* (1) 7. Memphis* (1) 8. Nashville* (1) 9. Seattle* (1) 10. St. Louis* (1)

(* denotes metropolitan area, including suburbs)

KEY STATS

2018-2020
Graduating Undergraduates
Biosystems Engineering

91.4%
Knowledge Rate
(106/116 responses)

98.1%
Placement Rate
(Employment/Education)

\$57,424
Average Starting Salary

\$58,000
Median Starting Salary

78.3%
Engaged in full- or part-time
employment

19.8%
Enrolled in graduate school or
other continuing education

ABET DESTINATION REPORT

CHEMICAL ENGINEERING (2018-2020)

COLLEGE OF ENGINEERING
MICHIGAN STATE UNIVERSITY

careers.egr.msu.edu | updated March 4, 2022 | photo via Unsplash



Student Composition

Male 71.2% (272)	Mechanical Engineering 21.8% (515)	Chemical Engineering 16.2% (382)	Electrical Engineering 8.8% (207)	Computer Engineering 4.9% (117)	Biosystems Engineering 4.9% (116)
Female 28.8% (110)	Computer Science 21.6% (510)	Applied Engineering Sci 11.0% (261)	Civil Engineering 6.6% (155)	Materials Sci Engineering 2.6% (61)	Environ Engineering 2.5% (60)
White 75.8% (285)	International 14.6% (55)	Asian 3.5% (13)	Hispanic 2.1% (8)	Multiracial 2.1% (8)	Black 1.9% (7)

(boxes are log-scaled for clarity)

Co-Curricular Experiences

70.8% Participated in ≥ 1 internship/co-op	31.1% Participated in undergrad research	19.5% Participated in a volunteer activity	6.7% Participated in education abroad
--	---	---	--

Top Destinations

by Employer	by State	by City (MI)	by City (non-MI)
1. General Motors (11)	1. Michigan (127)	1. Detroit* (41)	1. Chicago* (11)
2. Dow Chemical (8)	2. Illinois (12)	2. Kalamazoo* (12)	2. Madison, WI (6)
3. Pfizer (8)	3. Ohio (12)	3. Jackson (10)	3. Indianapolis* (5)
4. Hemlock Semiconductor (6)	4. Wisconsin (12)	4. Grand Rapids* (7)	4. Houston* (5)
5. Mars Inc. (6)	5. Indiana (9)	5. Lansing* (7)	5. Atlanta* (4)
6. Epic Software (5)	6. Iowa (9)	6. Midland* (6)	6. Cedar Rapids, IA* (3)
7. Gerdau (5)	7. Texas (7)	7. Holland* (4)	7. Minneapolis* (3)
8. Accenture (3)	8. Virginia (6)	8. St. Joseph* (3)	8. Boston* (2)
9. BASF (3)	9. Georgia (5)	9. Ann Arbor* (2)	9. Huntsville, AL* (2)
10. Cargill (3)	10. Alabama (3)	10. Battle Creek (2)	10. Washington DC* (2)

(* denotes metropolitan area, including suburbs)

KEY STATS

2018-2020
Graduating Undergraduates
Chemical Engineering

78.0%
Knowledge Rate
(298/382 responses)

96.3%
Placement Rate
(Employment/Education)

\$67,441
Average Starting Salary

\$70,000
Median Starting Salary

86.6%
Engaged in full- or part-time
employment

9.7%
Enrolled in graduate school or
other continuing education

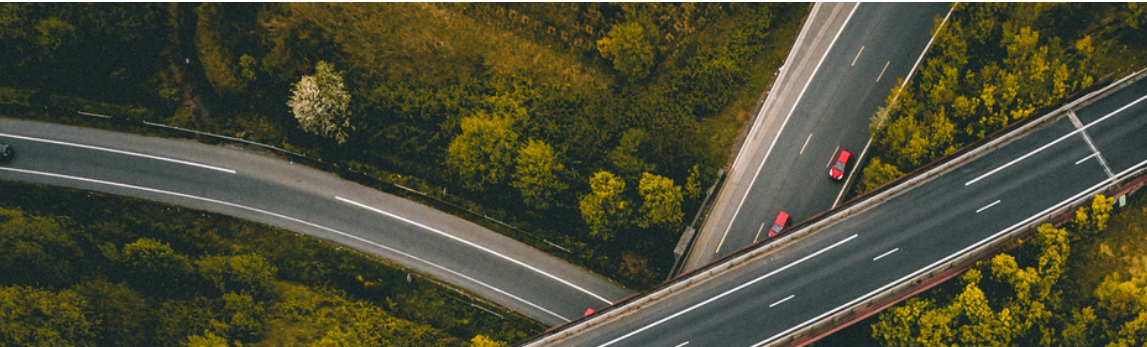
ABET DESTINATION REPORT

CIVIL ENGINEERING (2018-2020)

COLLEGE OF ENGINEERING

MICHIGAN STATE UNIVERSITY

careers.egr.msu.edu | updated March 4, 2022 | photo via Unsplash



Student Composition

Male 78.7% (122)	Mechanical Engineering 21.8% (515)	Chemical Engineering 16.2% (382)	Electrical Engineering 8.8% (207)	Computer Engineering 4.9% (117)	Biosystems Engineering 4.9% (116)
Female 21.3% (33)	Computer Science 21.6% (510)	Applied Engineering Sci 11.0% (261)	Civil Engineering 6.6% (155)	Materials Sci Engineering 2.6% (61)	Environ Engineering 2.5% (60)
White 75.5% (117)	International 14.2% (22)	Multiracial 3.9% (6)	Black 3.2% (5)	Asian 1.9% (3)	Hispanic 1.3% (2)

(boxes are log-scaled for clarity)

Co-Curricular Experiences

70.9% Participated in ≥ 1 internship/co-op	10.2% Participated in undergrad research	10.2% Participated in a volunteer activity	4.1% Participated in education abroad
--	---	---	--

Top Destinations

by Employer	by State	by City (MI)	by City (non-MI)
1. Commonwealth Associates (6)	1. Michigan (65)	1. Detroit* (19)	1. Chicago* (10)
2. MI Dept. of Transportation (6)	2. Illinois (10)	2. Lansing* (11)	2. Indianapolis* (3)
3. HNTB (4)	3. California (4)	3. Grand Rapids* (7)	3. Atlanta* (2)
4. General Motors (3)	4. Indiana (4)	4. Jackson (4)	4. Los Angeles* (2)
5. SME Soils & Materials (3)	5. Georgia (2)	5. Ann Arbor* (2)	5. Denver* (1)
6. Anderson, Eckstein, Westrick (2)	6. Ohio (2)	6. Benton Harbor (2)	6. Las Vegas* (1)
7. Abonmarche Consultants (2)	7. Colorado (1)	7. Grand Haven (2)	7. New York* (1)
8. Hubbell, Roth, Clark (2)	8. Nevada (1)	8. Howell (2)	8. Salt Lake City* (1)
9. Kiewit (2)	9. New York (1)	9. Saginaw (2)	9. San Diego* (1)
10. Kimley-Horn Associates (2)	10. Tennessee (1)	10. Battle Creek (1)	10. Seattle* (1)

(* denotes metropolitan area, including suburbs)

KEY STATS

2018-2020
Graduating Undergraduates
Civil Engineering

74.2%
Knowledge Rate
(115/155 responses)

100%
Placement Rate
(Employment/Education)

\$59,521
Average Starting Salary

\$60,000
Median Starting Salary

87.0%
Engaged in full- or part-time
employment

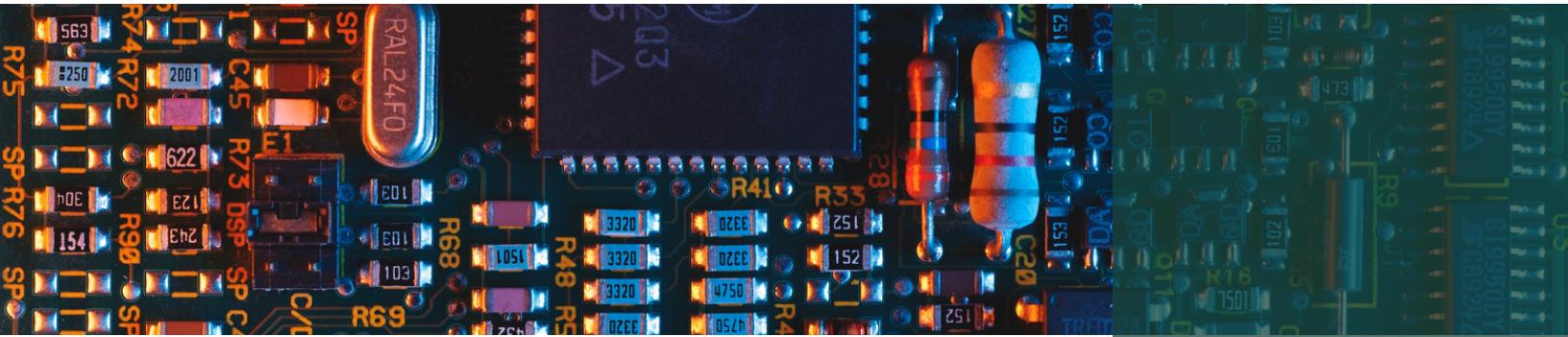
13.0%
Enrolled in graduate school or
other continuing education

ABET DESTINATION REPORT

COMPUTER ENGINEERING (2018-2020)

COLLEGE OF ENGINEERING
MICHIGAN STATE UNIVERSITY

careers.egr.msu.edu | updated March 4, 2022 | photo via Unsplash



Student Composition

Male 88.0% (103)	Mechanical Engineering 21.8% (515)	Chemical Engineering 16.2% (382)	Electrical Engineering 8.8% (207)	Computer Engineering 4.9% (117)	Biosystems Engineering 4.9% (116)
	Computer Science 21.6% (510)	Applied Engineering Sci 11.0% (261)	Civil Engineering 6.6% (155)	Materials Sci Engineering 2.6% (61)	Environ Engineering 2.5% (60)
Female 12.0% (14)					

White 53.4% (62)	International 22.4% (26)	Asian 16.4% (19)	Hispanic 4.3% (5)	Black 1.7% (2)	American Indian 0.9% (1)	Multiracial 0.9% (1)
------------------------	--------------------------------	------------------------	-------------------------	----------------------	--------------------------------	----------------------------

(boxes are log-scaled for clarity)

Co-Curricular Experiences

52.2% Participated in ≥ 1 internship/co-op	24.6% Participated in undergrad research	7.7% Participated in a volunteer activity	1.5% Participated in education abroad
--	---	--	--

Top Destinations

by Employer	by State	by City (MI)	by City (non-MI)
1. General Motors (10)	1. Michigan (37)	1. Detroit* (20)	1. Chicago* (2)
2. Bosch (2)	2. Illinois (2)	2. Lansing* (5)	2. Dallas* (2)
3. Epic Software (2)	3. Minnesota (2)	3. Grand Rapids* (4)	3. Minneapolis* (2)
4. SRC, Inc. (2)	4. New York (2)	4. Ann Arbor* (3)	4. Madison, WI* (2)
5. Target (2)	5. Texas (2)	5. Flint* (2)	5. Syracuse, NY* (2)
6. Texas Instruments (2)	6. Washington (2)	6. Romeo (1)	6. Bay Area, CA* (1)
7. US Dept. of Defense (2)	7. Wisconsin (2)	7. Clio (1)	7. Boston* (1)
8. Amazon (1)	8. Arizona (1)		8. Colorado Springs, CO* (1)
9. Microsoft (1)	9. California (1)		9. Seattle* (1)
10. Rocket Mortgage (1)	10. Colorado (1)		10. Washington DC* (1)

(* denotes metropolitan area, including suburbs)

KEY STATS

2018-2020
Graduating Undergraduates
Computer Engineering

71.2%

Knowledge Rate
(84/117 responses)

95.2%

Placement Rate
(Employment/Education)

\$71,960

Average Starting Salary

\$70,000

Median Starting Salary

69.0%

Engaged in full- or part-time
employment

26.2%

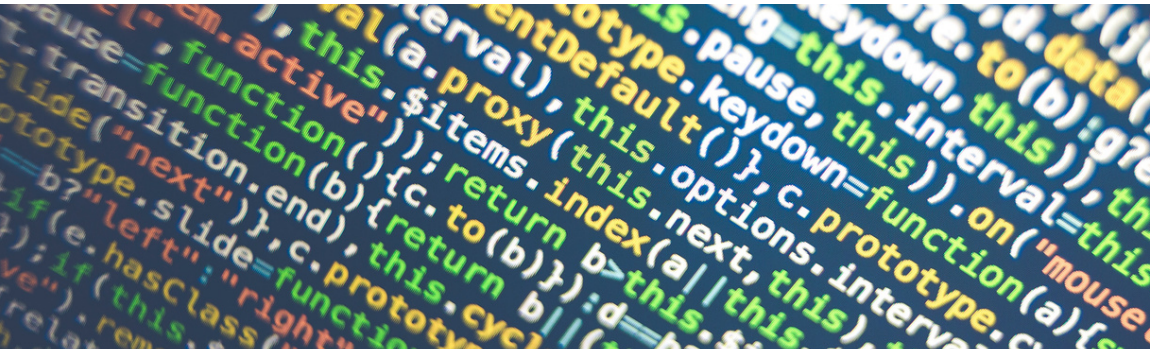
Enrolled in graduate school or
other continuing education

ABET DESTINATION REPORT

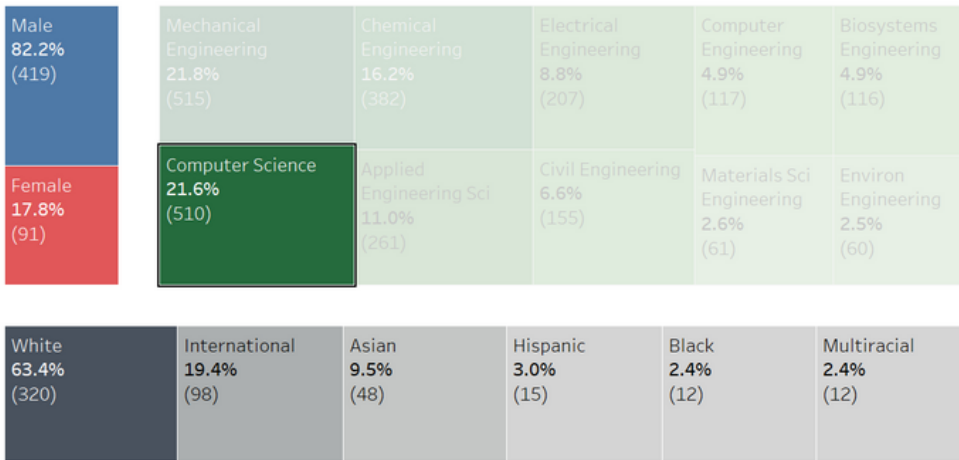
COMPUTER SCIENCE & ENGINEERING (2018-2020)

COLLEGE OF ENGINEERING
MICHIGAN STATE UNIVERSITY

careers.egr.msu.edu | updated March 4, 2022 | photo via Unsplash

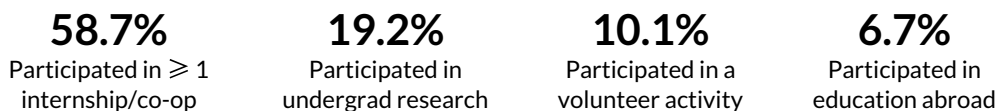


Student Composition



(boxes are log-scaled for clarity)

Co-Curricular Experiences



Top Destinations

by Employer	by State	by City (MI)	by City (non-MI)
1. General Motors (22)	1. Michigan (153)	1. Detroit* (68)	1. Chicago* (25)
2. Auto-Owners Insurance (11)	2. Illinois (26)	2. Lansing* (46)	2. Seattle* (13)
3. Rocket Mortgage (8)	3. Washington (13)	3. Ann Arbor (13)	3. Minneapolis* (10)
4. Target (8)	4. Minnesota (12)	4. Grand Rapids* (12)	4. Washington DC* (8)
5. Microsoft (7)	5. California (11)	5. Bay City (1)	5. Madison, WI* (6)
6. Capital One (5)	6. Texas (7)	6. Brighton (1)	6. Bay Area, CA* (6)
7. Deloitte (5)	7. Wisconsin (7)	7. Kalamazoo* (1)	7. Dallas* (4)
8. Domino's Pizza (5)	8. Virginia (6)	8. Richmond (1)	8. Boston* (3)
9. Ford Motor (5)	9. Indiana (5)	9. McMillan (1)	9. Denver* (3)
10. Amazon (4)	10. Colorado (4)	10. Rockford (1)	10. New York* (3)

(* denotes metropolitan area, including suburbs)

KEY STATS

2018-2020

Graduating Undergraduates
Computer Science & Engineering

74.7%

Knowledge Rate
(381/510 responses)

95.0%

Placement Rate
(Employment/Education)

\$76,556

Average Starting Salary

\$72,000

Median Starting Salary

77.7%

Engaged in full- or part-time
employment

17.3%

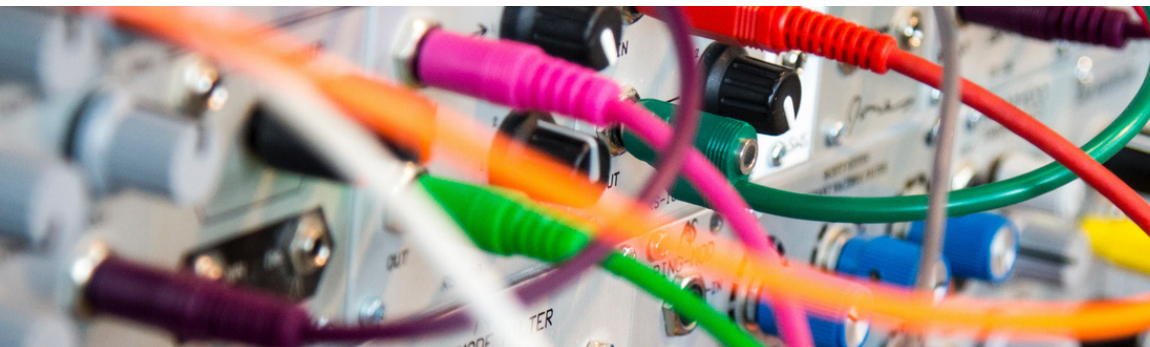
Enrolled in graduate school or
other continuing education

ABET DESTINATION REPORT

ELECTRICAL ENGINEERING (2018-2020)

COLLEGE OF ENGINEERING
MICHIGAN STATE UNIVERSITY

careers.egr.msu.edu | updated March 4, 2022 | photo via Unsplash



Student Composition

Male 89.4% (185)	Mechanical Engineering 21.8% (515)	Chemical Engineering 16.2% (382)	Electrical Engineering 8.8% (207)	Computer Engineering 4.9% (117)	Biosystems Engineering 4.9% (116)
Female 10.6% (22)	Computer Science 21.6% (510)	Applied Engineering Sci 11.0% (261)	Civil Engineering 6.6% (155)	Materials Sci Engineering 2.6% (61)	Environ Engineering 2.5% (60)

White 50.7% (104)	International 28.8% (59)	Asian 9.8% (20)	Hispanic 5.9% (12)	Black 3.9% (8)	Multiracial 1.0% (2)
-------------------------	--------------------------------	-----------------------	--------------------------	----------------------	----------------------------

(boxes are log-scaled for clarity)

Co-Curricular Experiences

54.7% Participated in ≥ 1 internship/co-op	26.6% Participated in undergrad research	16.4% Participated in a volunteer activity	7.8% Participated in education abroad
--	---	---	--

Top Destinations

by Employer	by State	by City (MI)	by City (non-MI)
1. General Motors (26)	1. Michigan (68)	1. Detroit* (46)	1. Chicago* (4)
2. Consumers Energy (3)	2. Illinois (5)	2. Lansing* (4)	2. Dallas* (3)
3. General Dynamics (3)	3. Ohio (5)	3. Grand Rapids* (3)	3. Bay Area, CA* (2)
4. Lockheed Martin (3)	4. Texas (4)	4. Jackson (3)	4. Findlay, OH (2)
5. Texas Instruments (3)	5. California (3)	5. Ann Arbor (2)	5. Atlanta* (1)
6. Bosch (2)	6. Connecticut (2)	6. Alpena (1)	6. Boston* (1)
7. Fiat Chrysler Automobiles (2)	7. Florida (2)	7. Kalamazoo (1)	7. Madison, WI (1)
8. Raytheon (2)	8. Indiana (2)	8. Flint (1)	8. Miami* (1)
9. Williams International (2)	9. Minnesota (2)	9. Midland (1)	9. Milwaukee* (1)
10. Marathon Petroleum (2)	10. Virginia (2)	10. Zeeland (1)	10. Minneapolis* (1)

(* denotes metropolitan area, including suburbs)

KEY STATS

2018-2020
Graduating Undergraduates
Electrical Engineering

74.8%
Knowledge Rate
(155/207 responses)

94.8%
Placement Rate
(Employment/Education)

\$73,688
Average Starting Salary

\$75,000
Median Starting Salary

71.6%
Engaged in full- or part-time
employment

23.2%
Enrolled in graduate school or
other continuing education

ABET DESTINATION REPORT

ENVIRONMENTAL ENGINEERING (2018-2020)

COLLEGE OF ENGINEERING
MICHIGAN STATE UNIVERSITY

careers.egr.msu.edu | updated March 4, 2022 | photo via Unsplash



Student Composition

Female 50.0% (30)	Mechanical Engineering 21.8% (515)	Chemical Engineering 16.2% (382)	Electrical Engineering 8.8% (207)	Computer Engineering 4.9% (117)	Biosystems Engineering 4.9% (116)
Male 50.0% (30)	Computer Science 21.6% (510)	Applied Engineering Sci 11.0% (261)	Civil Engineering 6.6% (155)	Materials Sci Engineering 2.6% (61)	Environ Engineering 2.5% (60)
White 76.7% (46)	International 11.7% (7)	Asian 3.3% (2)	Black 3.3% (2)	Hispanic 3.3% (2)	Multiracial 1.7% (1)

(boxes are log-scaled for clarity)

Co-Curricular Experiences

62.8%

Participated in ≥ 1
internship/co-op

20.9%

Participated in
undergrad research

18.6%

Participated in a
volunteer activity

11.6%

Participated in
education abroad

Top Destinations

by Employer

1. Stantec (4)
2. Hubbell, Roth, Clark (3)
3. US Army Corps of Engineers (2)
4. Applied Science, Inc. (1)
5. Archer Western Construction (1)
6. Barton Malow Builders (1)
7. General Motors (1)
8. MI Dept. of Environ. Quality (1)
9. SME Soils & Materials (1)
10. Textron (1)

by State

1. Michigan (24)
2. Ohio (2)
3. California (1)
4. Florida (1)
5. Georgia (1)
6. Indiana (1)
7. Iowa (1)
8. Kansas (1)
9. Maryland (1)
10. Massachusetts (1)

by City (MI)

1. Detroit* (13)
2. Lansing* (6)
3. Grand Rapids* (2)

by City (non-MI)

1. Baltimore* (1)
2. Bay Area, CA* (1)
3. Boston* (1)
4. Buffalo* (1)
5. Cincinnati* (1)
6. Chicago* (1)
7. Cleveland* (1)
8. Indianapolis* (1)
9. Waterloo, IA (1)
10. Wichita, KS (1)

(* denotes metropolitan area, including suburbs)

KEY STATS

2018-2020
Graduating Undergraduates
Environmental Engineering

81.7%

Knowledge Rate
(49/60 responses)

98.0%

Placement Rate
(Employment/Education)

\$56,083

Average Starting Salary

\$56,000

Median Starting Salary

75.5%

Engaged in full- or part-time
employment

22.5%

Enrolled in graduate school or
other continuing education

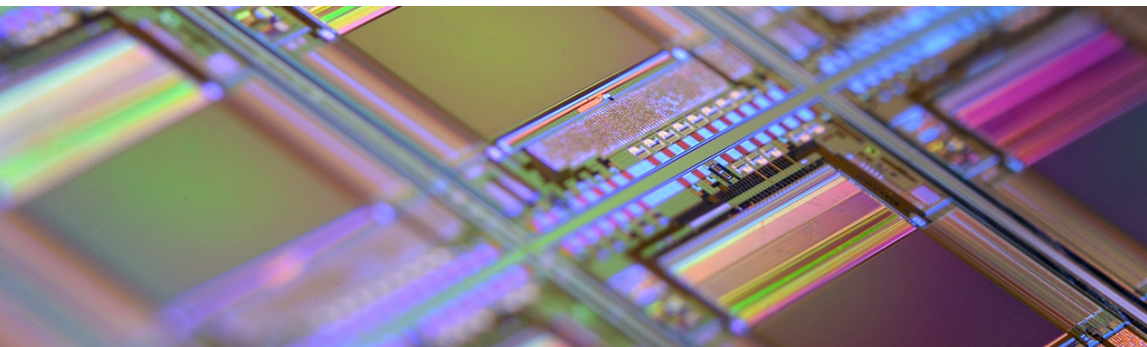
ABET DESTINATION REPORT

MATERIALS SCIENCE ENGINEERING (2018-2020)

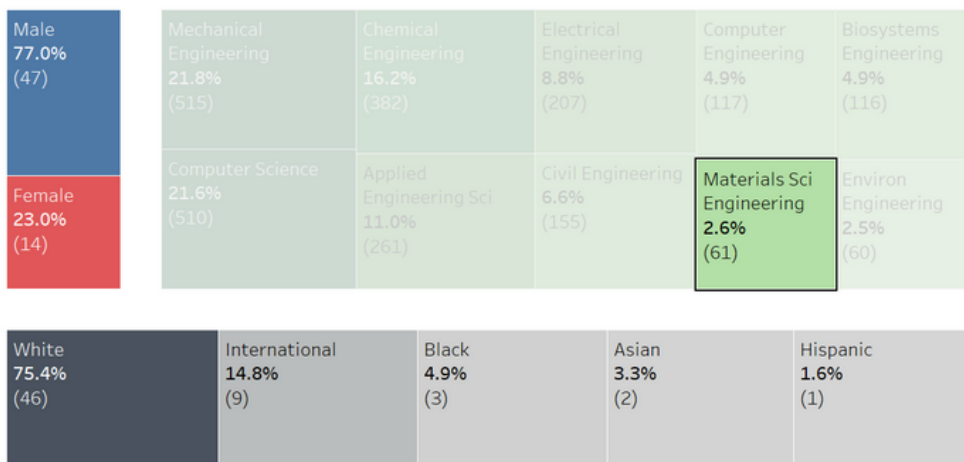
COLLEGE OF ENGINEERING

MICHIGAN STATE UNIVERSITY

careers.egr.msu.edu | updated March 4, 2022 | photo via Unsplash

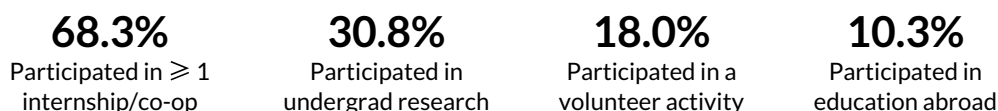


Student Composition



(boxes are log-scaled for clarity)

Co-Curricular Experiences



Top Destinations

by Employer	by State	by City (MI)	by City (non-MI)
1. ArcelorMittal (2)	1. Michigan (15)	1. Detroit* (12)	1. Chicago* (5)
2. Fiat Chrysler Automobiles (2)	2. Illinois (3)	2. Jackson (1)	2. Pittsburgh* (2)
3. General Motors (2)	3. Pennsylvania (3)	3. Auburn (1)	3. Portland* (2)
4. Textron (2)	4. Indiana (2)		4. Bay Area* (1)
5. Amazon (1)	5. Ohio (2)		5. Cincinnati* (1)
6. Arconic (1)	6. Washington (2)		6. Milwaukee* (1)
7. Boeing (1)	7. California (1)		7. New York* (1)
8. GE Aviation (1)	8. Kansas (1)		8. Seattle* (1)
9. Lockheed Martin (1)	9. Maryland (1)		9. Syracuse, NY (1)
10. Williams International (1)	10. New Jersey (1)		10. Wichita, KS (1)

(* denotes metropolitan area, including suburbs)

KEY STATS

2018-2020
Graduating Undergraduates
Materials Science Engineering

85.3%
Knowledge Rate
(52/61 responses)

92.3%
Placement Rate
(Employment/Education)

\$66,788
Average Starting Salary

\$68,000
Median Starting Salary

76.9%
Engaged in full- or part-time
employment

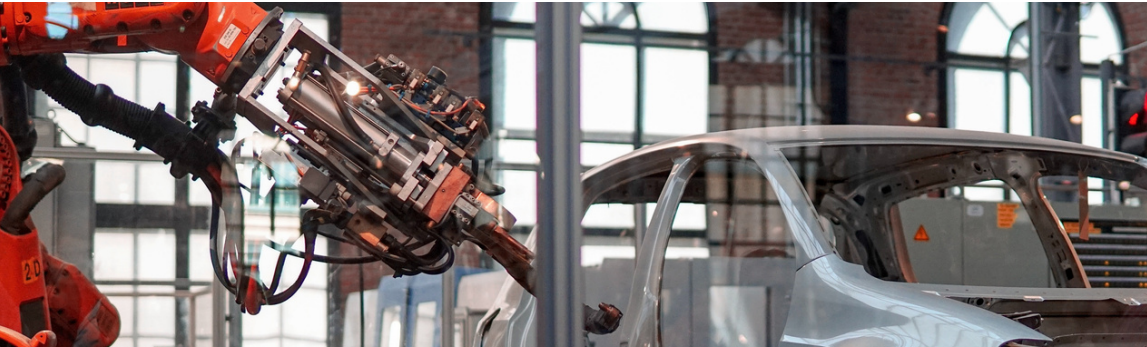
15.4%
Enrolled in graduate school or
other continuing education

ABET DESTINATION REPORT

MECHANICAL ENGINEERING (2018-2020)

COLLEGE OF ENGINEERING
MICHIGAN STATE UNIVERSITY

careers.egr.msu.edu | updated March 4, 2022 | photo via Unsplash



Student Composition

Male 80.6% (415)	Mechanical Engineering 21.8% (515)	Chemical Engineering 16.2% (382)	Electrical Engineering 8.8% (207)	Computer Engineering 4.9% (117)	Biosystems Engineering 4.9% (116)
Female 19.4% (100)	Computer Science 21.6% (510)	Applied Engineering Sci 11.0% (261)	Civil Engineering 6.6% (155)	Materials Sci Engineering 2.6% (61)	Environ Engineering 2.5% (60)

White 75.0% (381)	International 12.0% (61)	Asian 7.1% (36)	Black 2.4% (12)	Multiracial 1.8% (9)	Hispanic 1.6% (8)	American Indian 0.2% (1)
-------------------------	--------------------------------	-----------------------	-----------------------	----------------------------	-------------------------	--------------------------------

(boxes are log-scaled for clarity)

Co-Curricular Experiences

70.8% Participated in ≥ 1 internship/co-op	20.3% Participated in undergrad research	13.9% Participated in a volunteer activity	9.5% Participated in education abroad
--	---	---	--

Top Destinations

by Employer	by State	by City (MI)	by City (non-MI)
1. General Motors (37)	1. Michigan (206)	1. Detroit* (136)	1. Chicago* (7)
2. Ford Motors (23)	2. Ohio (11)	2. Lansing* (10)	2. Bay Area, CA* (6)
3. Williams International (14)	3. California (9)	3. Kalamazoo* (8)	3. Cincinnati* (4)
4. Fiat Chrysler Automobiles (6)	4. Illinois (9)	4. Ann Arbor* (7)	4. Washington DC (4)
5. Nexteer Automotive (5)	5. Indiana (5)	5. Grand Rapids* (7)	5. Atlanta* (3)
6. Nissan Motor Company (5)	6. Massachusetts (4)	6. Jackson (5)	6. Boston* (3)
7. Pfizer (5)	7. North Carolina (4)	7. Saginaw (5)	7. Charlotte* (3)
8. Eaton (4)	8. Georgia (3)	8. Midland (1)	8. Dallas* (2)
9. Bosch (3)	9. Maryland (3)	9. Bay City (1)	9. Indianapolis* (2)
10. General Electric (3)	10. Texas (3)	10. Traverse City (1)	10. Seattle* (2)

(* denotes metropolitan area, including suburbs)

KEY STATS

2018-2020
Graduating Undergraduates
Mechanical Engineering

77.7%
Knowledge Rate
(400/515 responses)

93.5%
Placement Rate
(Employment/Education)

\$68,954
Average Starting Salary

\$70,000
Median Starting Salary

80.5%
Engaged in full- or part-time
employment

13.5%
Enrolled in graduate school or
other continuing education